

INDEX OF SHEETS

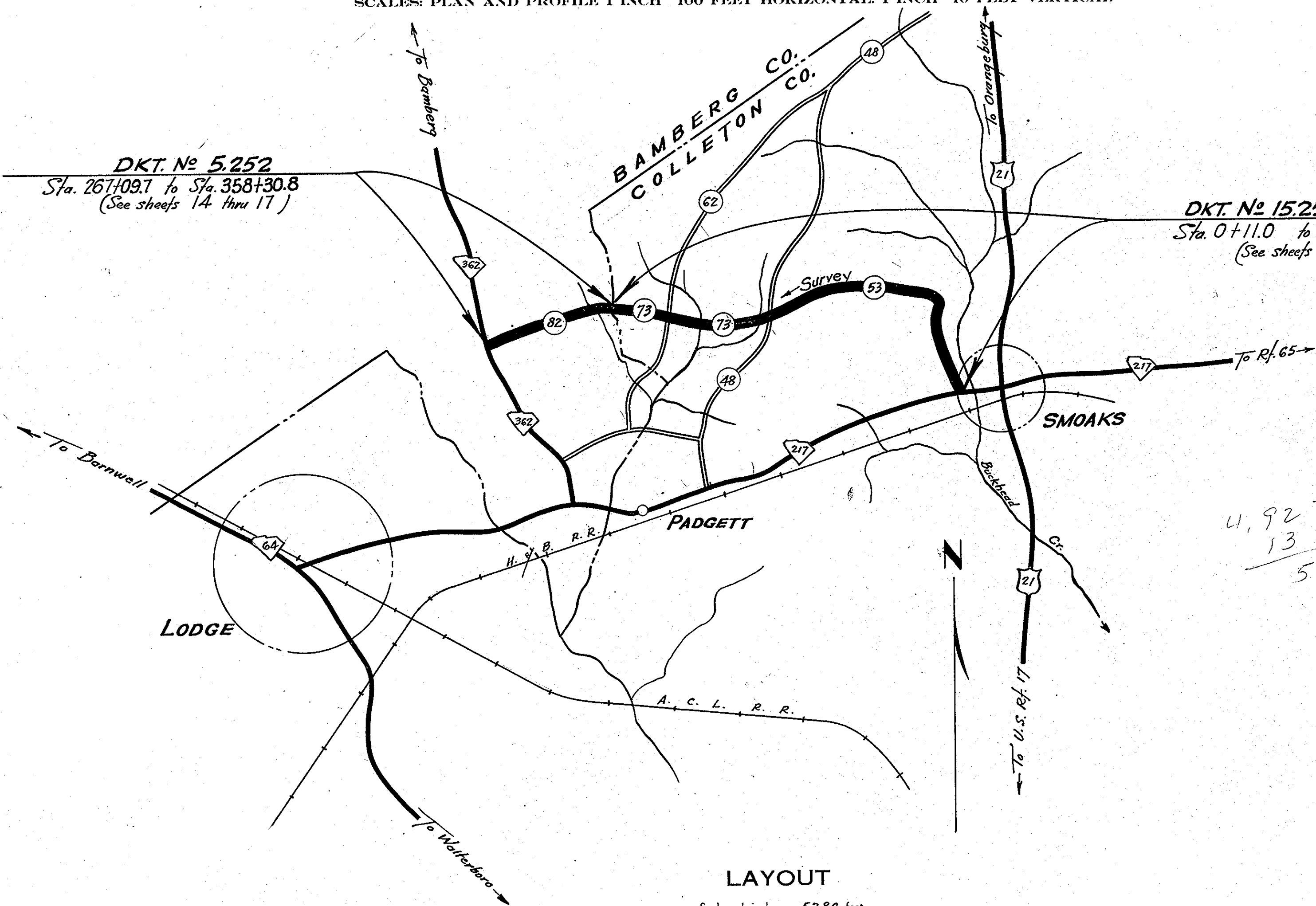
Sheet No. 1	Title Sheet
" " 2	Typical Sections of Improvement
" " 3	Standard Type Intersections
" " 4	Superelevation Standard
" " 5-17	Plan and Profile
" " 18-52	Cross Sections
" " 1-A	Fence Moving

SOUTH CAROLINA  
STATE HIGHWAY DEPARTMENT  
COLUMBIA

PLAN AND PROFILE OF PROPOSED  
STATE HIGHWAY

DKT. N° 15.259 Parts 1 & 2 - RDS. 53 & 73, FROM RT. 217 IN SMOAKS TO BAMBERG CO. LINE - COLLETON CO.  
DKT. N° 5.252 - RD. 82, FROM COLLETON CO. LINE TO RT. 362 — BAMBERG CO.

SCALE: PLAN AND PROFILE 1 INCH = 100 FEET HORIZONTAL; 1 INCH = 10 FEET VERTICAL



LAYOUT

	DKT. 15.259	DKT. 5.252	
	Part 1	Part 2	
Net Length of Roadway	0.134	4.922	1.727
Net Length of Bridges	0.000	0.000	0.000
Net Length of Project	0.134	4.922	1.727
Length of Exceptions	0.000	0.000	0.000
Gross Length of Project	0.134	4.922	1.727

Equalities in Stationing  
Sta. 198+12.3 - Sta. 198+11.0

Note: All workmanship and material on this project to conform with South Carolina State Highway Department Standard Specifications for Highway Construction dated March 15th 1939, as approved by the Administrator, Federal Works Agency.

FED. ROAD DIV. NO.	STATE	COUNTY	DOCKET NO.	PROJECT NO.	ROUTE NO.	SHEET NO.	TOTAL SHEETS
3	S. C.	Bamberg (Colleton)	5.252 15.259		79.82	1	52

SUMMARY OF ESTIMATED QUANTITIES

	DKT. 15.259 Part 1	DKT. 15.259 Part 2	DKT. 5.252	
<b>EARTHWORK:</b>				
Clearing and Grubbing within Roadway	Neqy.	Neqy.	Neqy.	Aeres
" " of Borrow & Material Pits	0.5	2.0	1.0	C.Y.
Common Excavation	101	18,403	6870	C.Y. H.M.
Overhaul	583	27,537	9329	
<b>BASE COURSE:</b>				
Earth Type Base Course (At Material)	352	11,790	4,211	C.Y.
Scarifying, Mixing, Remixing, Shaping & Reshaping	1,697	56,670	20,256	M.S.Y.
Add'l. " " " "	0.400	14,000	5,000	
<b>SURFACING:</b>				
Bituminous Surfacing (1 in. Pen. with Seal)	1618	53,782	19,242	S.Y.
<b>STRUCTURES:</b>				
15" R.C. Pipe		40	160	L.F.
18" " " "		706	212	" "
24" " " "		88	12	" "
30" " " "			36	" "
42" " " "		108		" "
60" " " "		36		" "
72" " " "		36		" "
15" Relaid Pipe		79		" "
24" " " "		21		" "
Rip Rap		10		Tons
<b>INCIDENTALS:</b>				
Moving Item No. 1- Pitch Pump 15' Rt. & Sta. 44+50		UNIT		L.S.
Moving Item No. 2- Barn and stables (30' x 40') Rt. Sta. 44+50		UNIT		L.S.

DKT. N° 15.259 Parts 1 & 2 See Sheet No. 1-A For Fences  
Sta. 0+11.0 to Sta. 267+09.7  
(See sheets 5 thru 14.)

4,922  
13  
56

OK  
8/16/49  
7/7/49

CONVENTIONAL SIGNS

State Line	Trolley Poles
County Line	Power Poles
City or Town Limits	Telephone or Telegraph Poles
Property Line	Marsh
Fence	Trees
Retaining Wall	Brush
Existing Road	Stumps
and R.O.W. Lines of	Buildings
Proposed Road	Bridge
Railroad	Concrete Box Culvert
Levee or Embankment	Pipe Culvert
Guard Rail	Drop Inlet and Culvert
Point of Intersection (P. I.)	Hub on Center Line

LEGEND

PROPOSED PROJECT  
OTHER ROADS

APPROVED FOR THE TOWN OF SMOAKS

DATE

Mayor 8-16-49  
8-16-49  
8-16-49  
8-16-49  
Clerk 8-16-49

APPROVED

STATE HIGHWAY ENGINEER  
7/7/49

RECOMMENDED FOR APPROVAL

DISTRICT ENGINEER  
PUBLIC ROADS ADMINISTRATION  
FEDERAL WORKS AGENCY

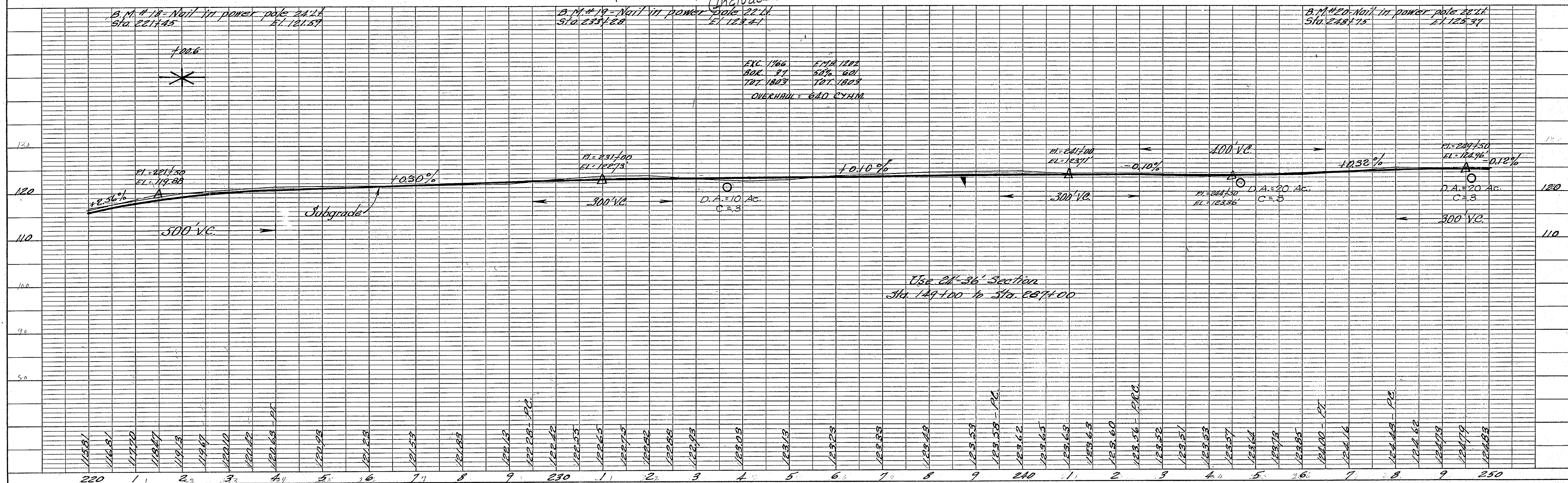
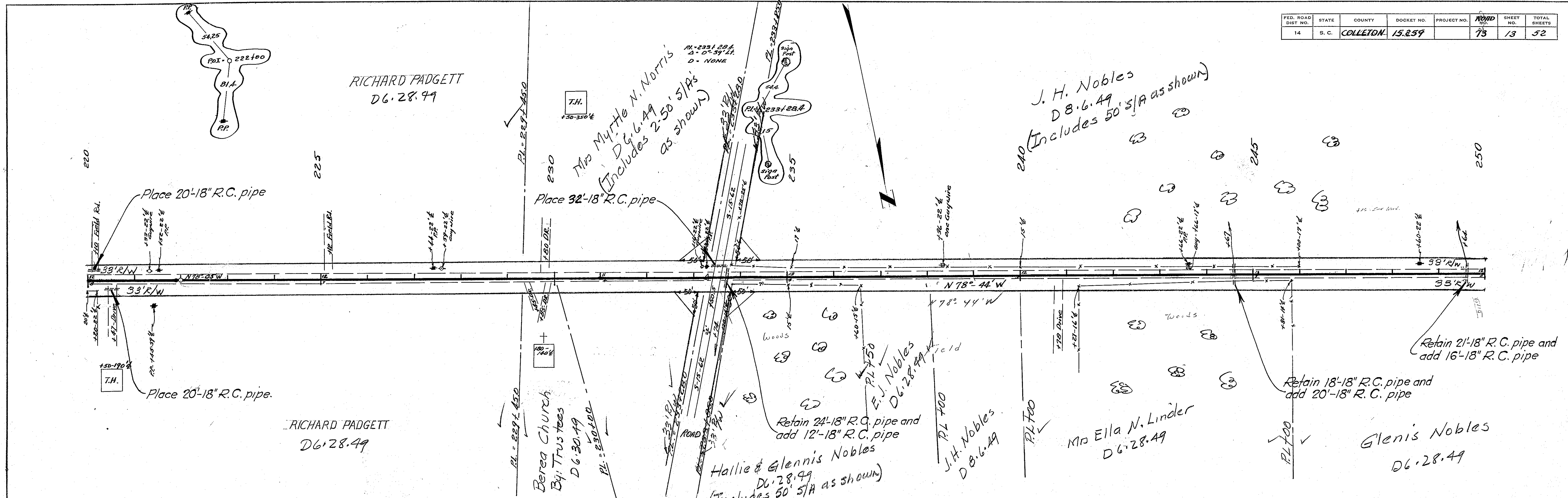
APPROVED

DIVISION ENGINEER  
PUBLIC ROADS ADMINISTRATION  
FEDERAL WORKS AGENCY

FED. ROAD DIST. NO.	STATE	COUNTY	DOCKET NO.	PROJECT NO.	ROAD NO.	SHEET NO.	TOTAL SHEETS
14	S. C.	COLLETON	15.259		73	13	52

PLAN	DATE	BY
NOTE BOOK		
NO.		

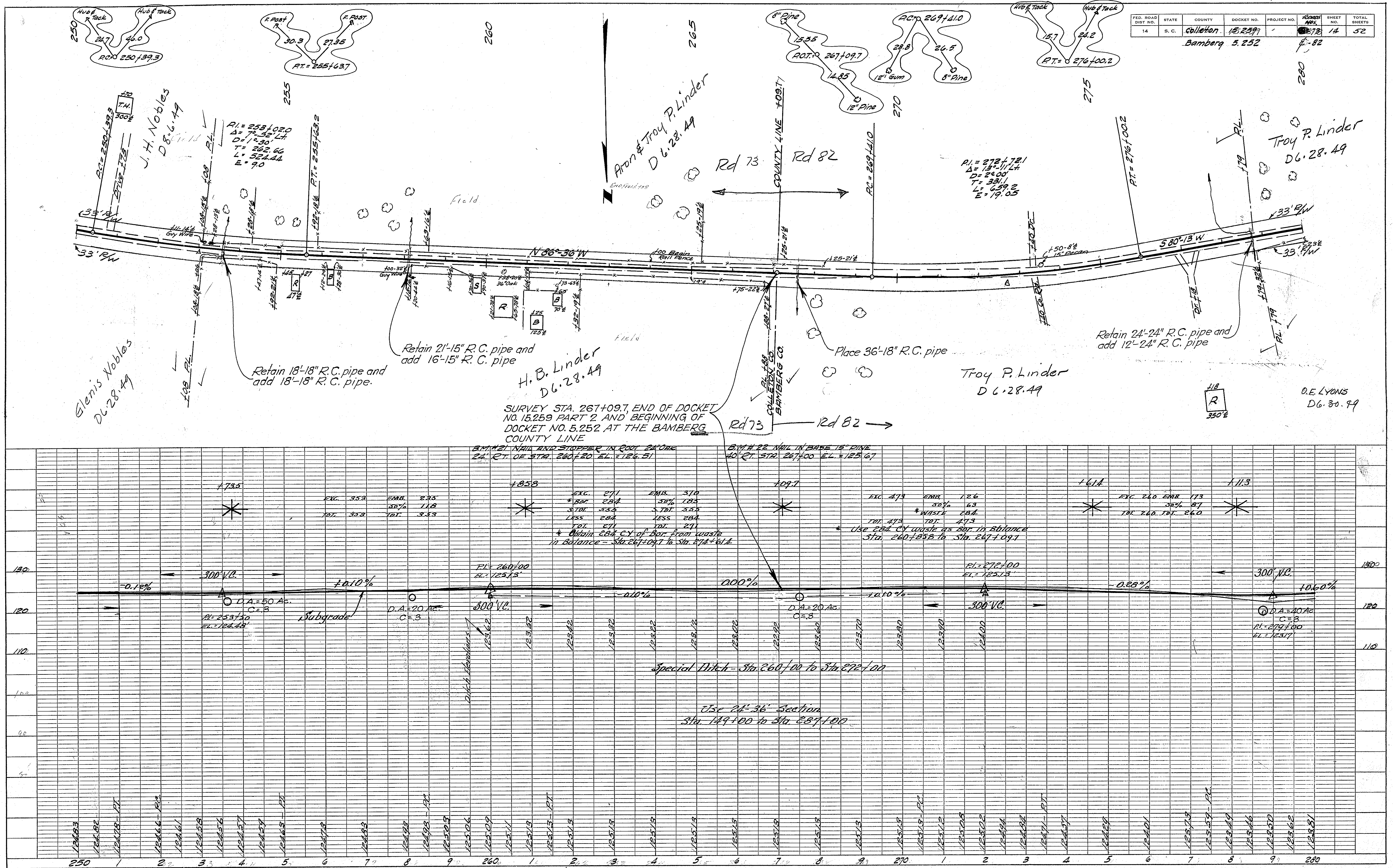
PROFILE	DATE	BY
NOTE BOOK		
NO.		





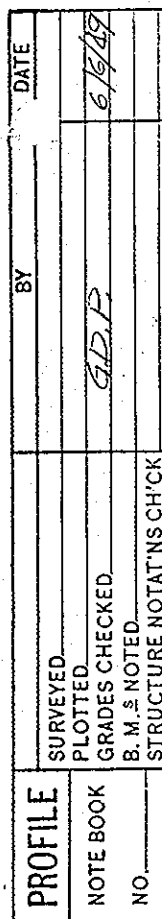
PLAN	SURV. D. PLOT D.	BY	DATE
NOTE BOOK	ALIGNMENT CHECKED		
NO.	RT. OF WAY CHECKED		

PROFILE	SURVEYED	BY	DATE
NOTE BOOK	PLOTTED		
	GRADES CHECKED	GDP	8/6/09
NO.	B. M. $\frac{5}{2}$ NOTED		
	STRUCTURE NOTATIONS CH'CK		





PLAN	SURV. ID.	BY	DATE
NOTE BOOK	PLOTTED	GRP	6/14/79
NO.	ALIGNMENT CHECKED		
	RT. OF WAY CHECKED		

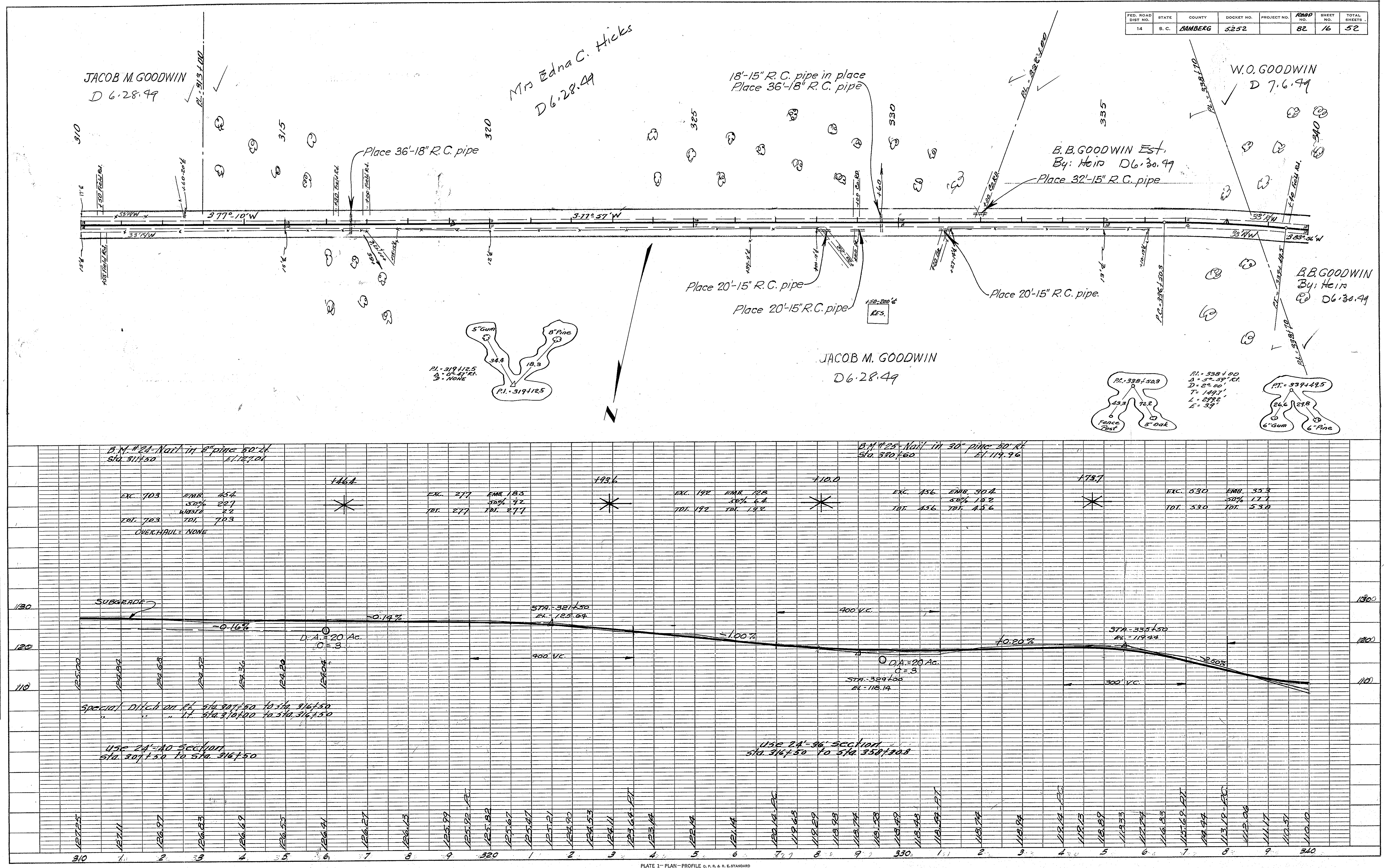




FED. ROAD DIST. NO.	STATE	COUNTY	DOCKET NO.	PROJECT NO.	ROAD NO.	SHEET NO.	TOTAL SHEETS
14	S. C.	SANBERG	5252		82	16	52

PLAN	DATE	BY
PLAN	6/1/29	EDP
NOTE BOOK		
NO. 15025		

PROFILE	DATE	BY
PROFILE	6/1/29	EDP
NOTE BOOK		
NO. 15025		





FED. ROAD DIST. NO.	STATE	COUNTY	DOCKET NO.	PROJECT NO.	DATE	SHEET NO.	TOTAL SHEETS
14	S.C.	Bamberg	5.252			82	17

PLAN	DATE	BY	DATE	BY
NO.				
NO.				
NO.				
NO.				

PROFILE	DATE	BY	DATE	BY
NO.				
NO.				
NO.				
NO.				

